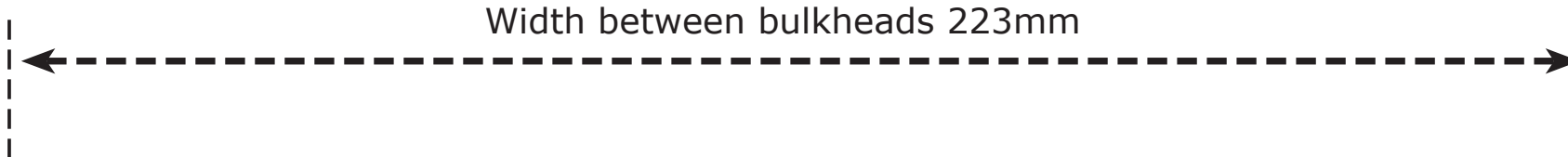
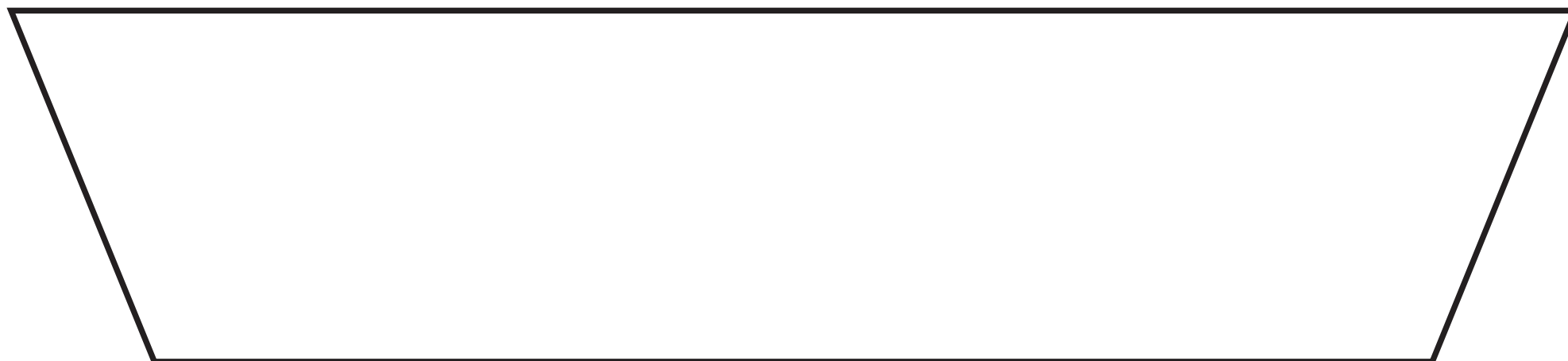


Width between bulkheads 223mm



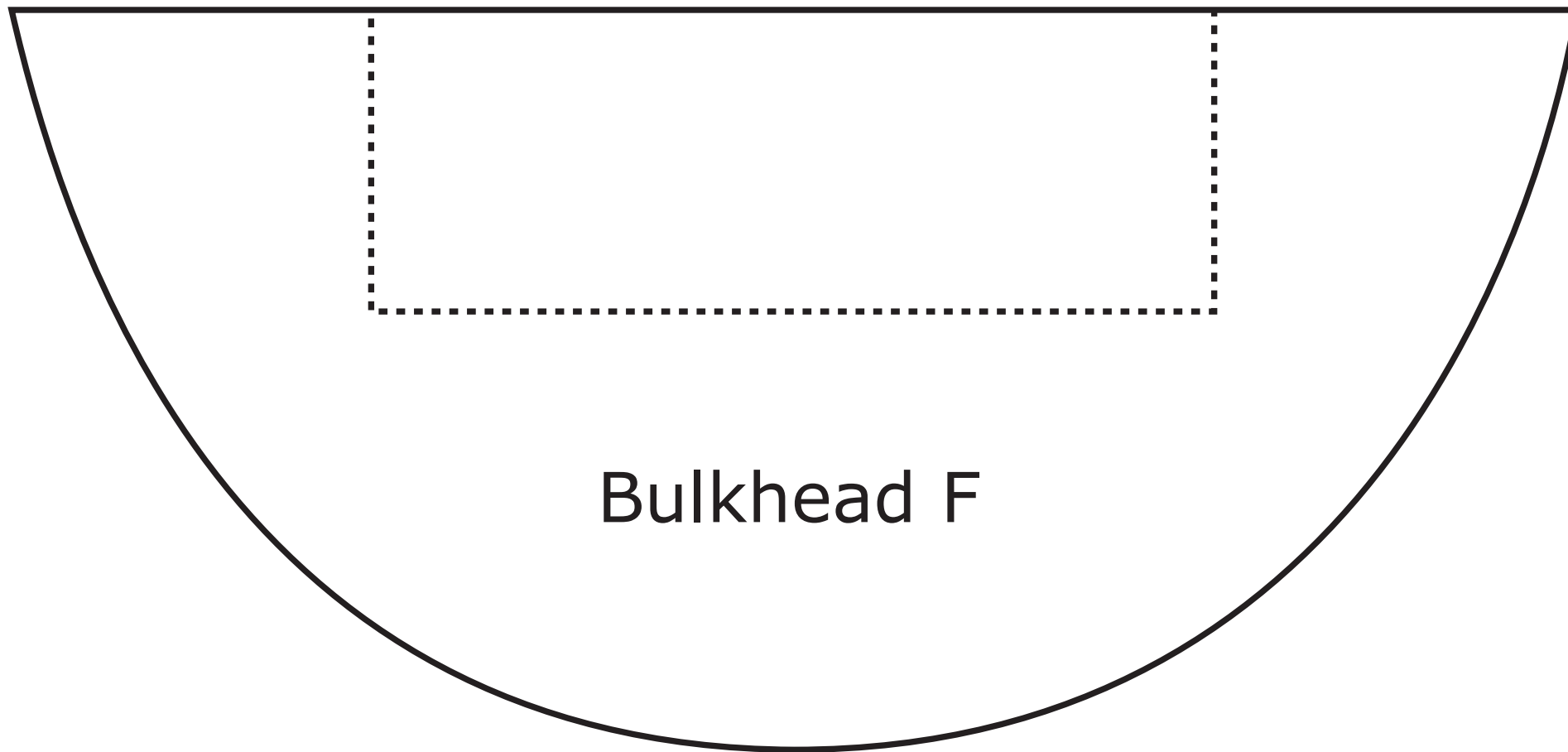
Bulkhead G

Bulkhead C2

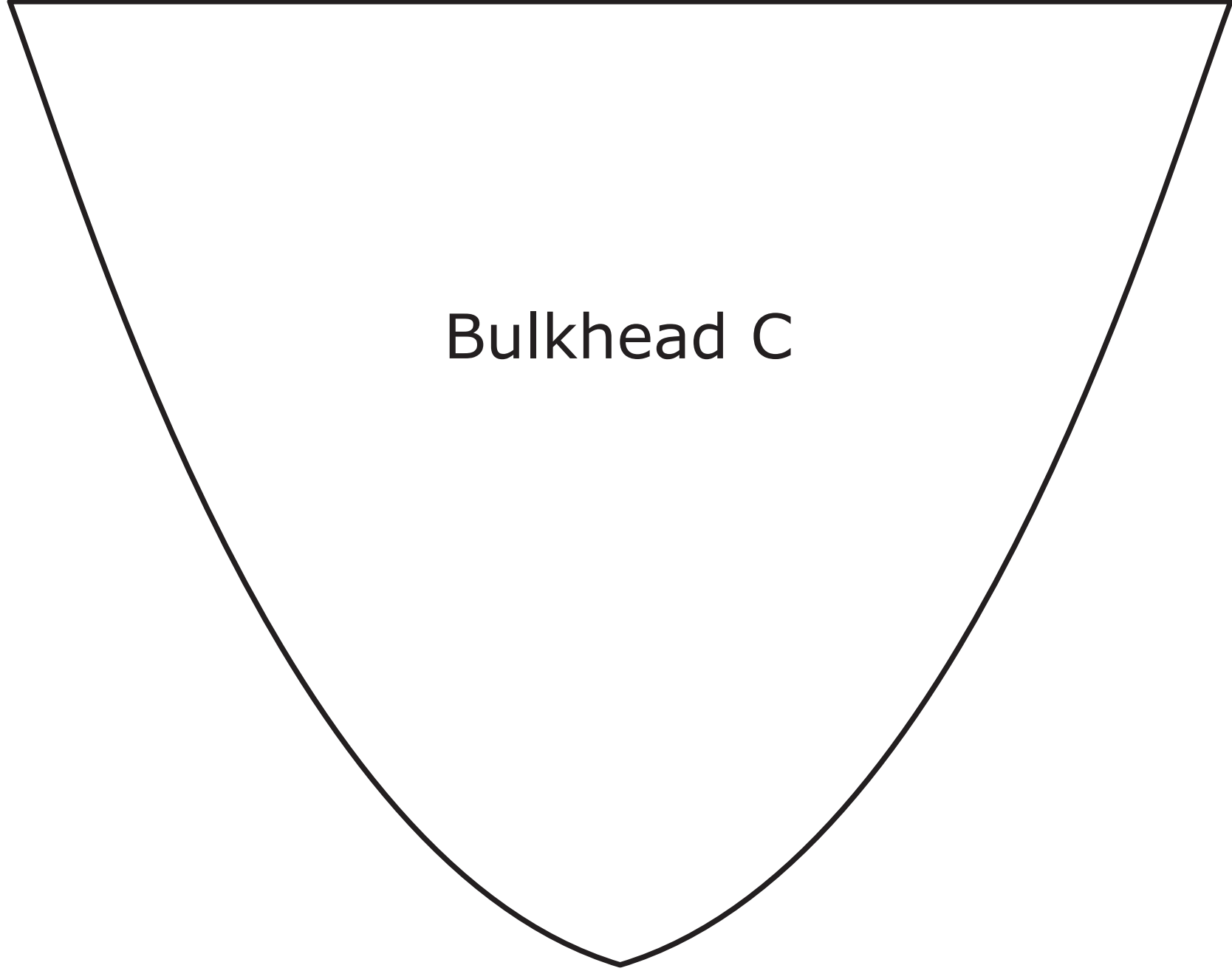




Nose Bulkhead A2



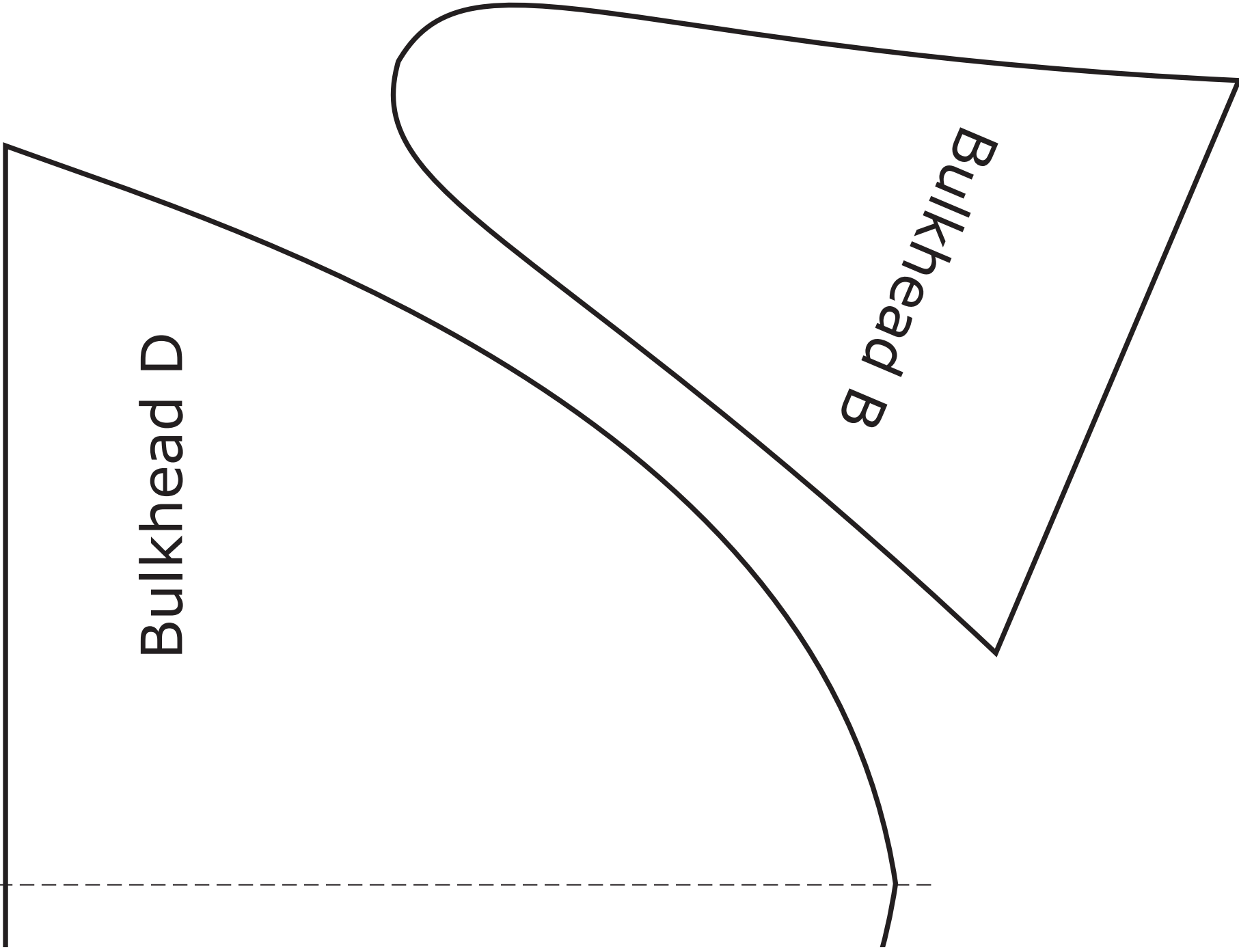
Bulkhead F

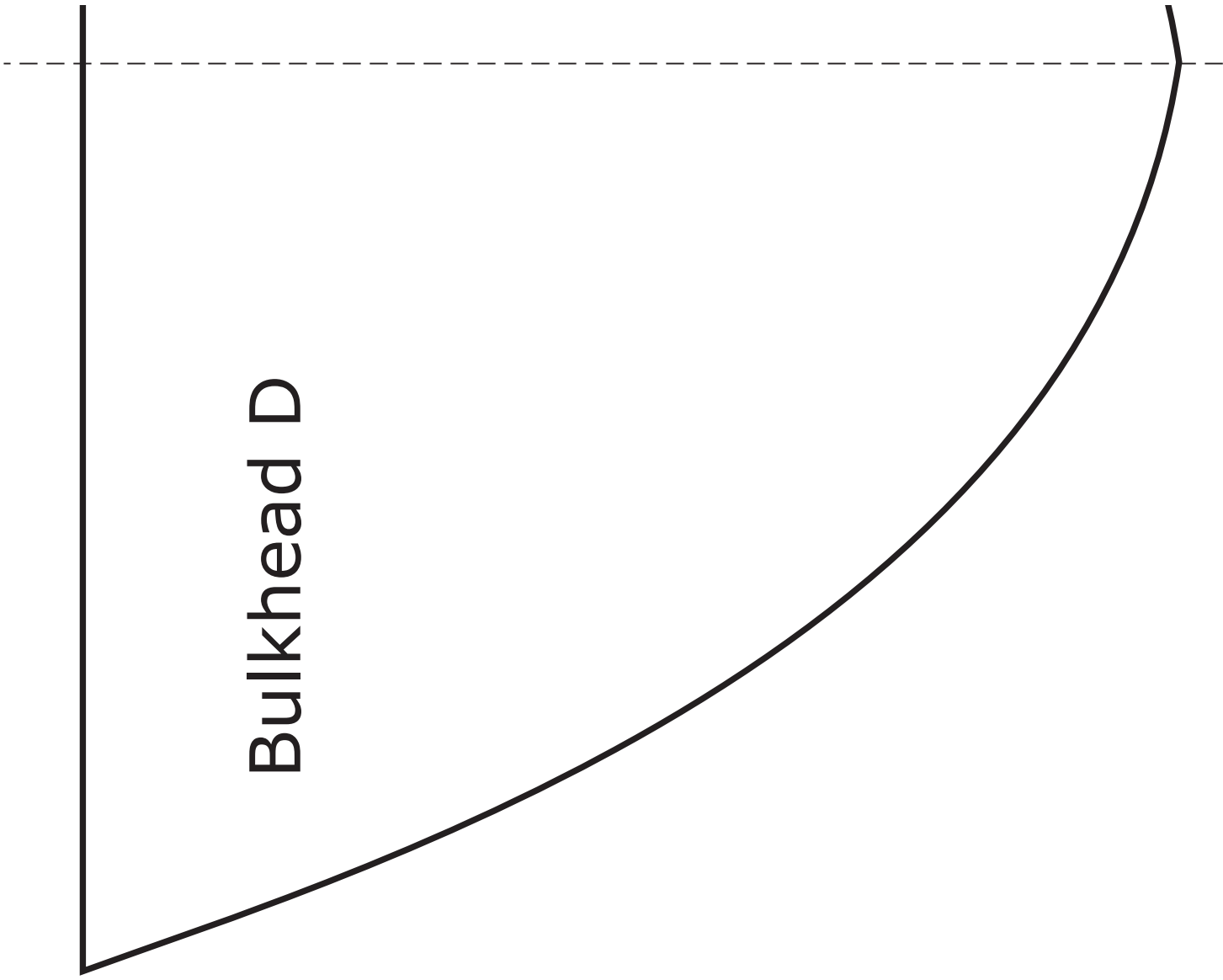


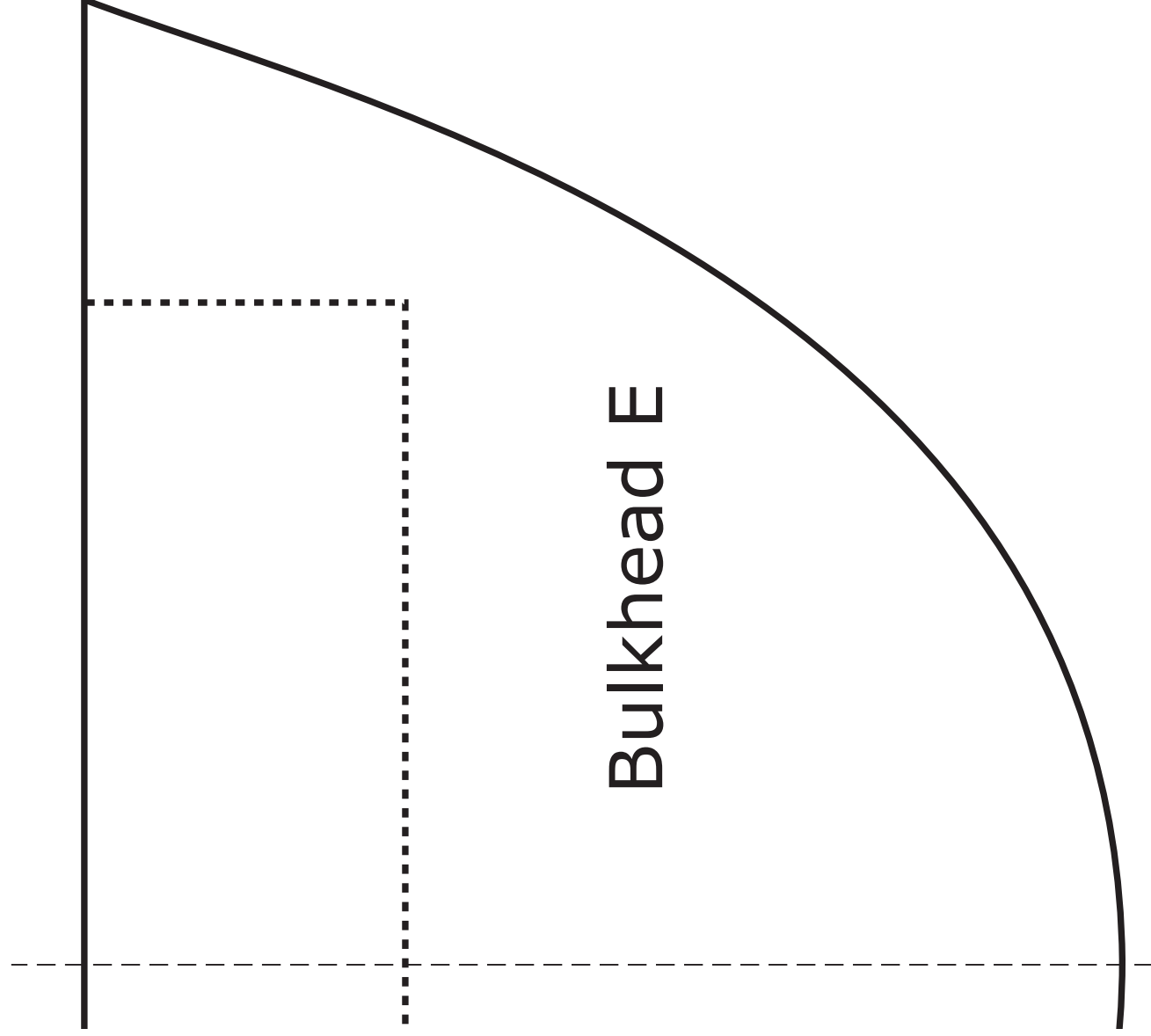
Bulkhead C

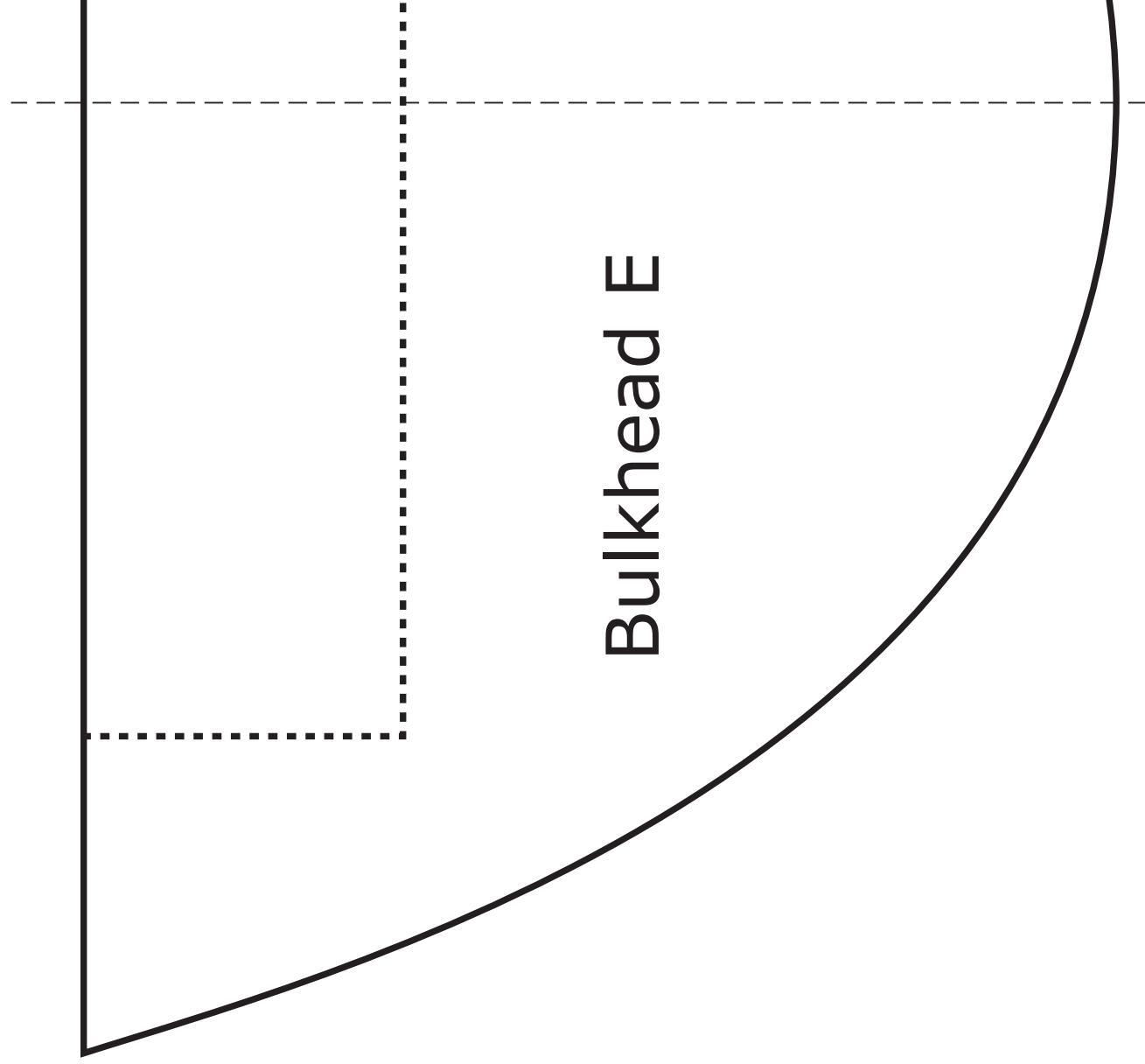
Bulkhead D

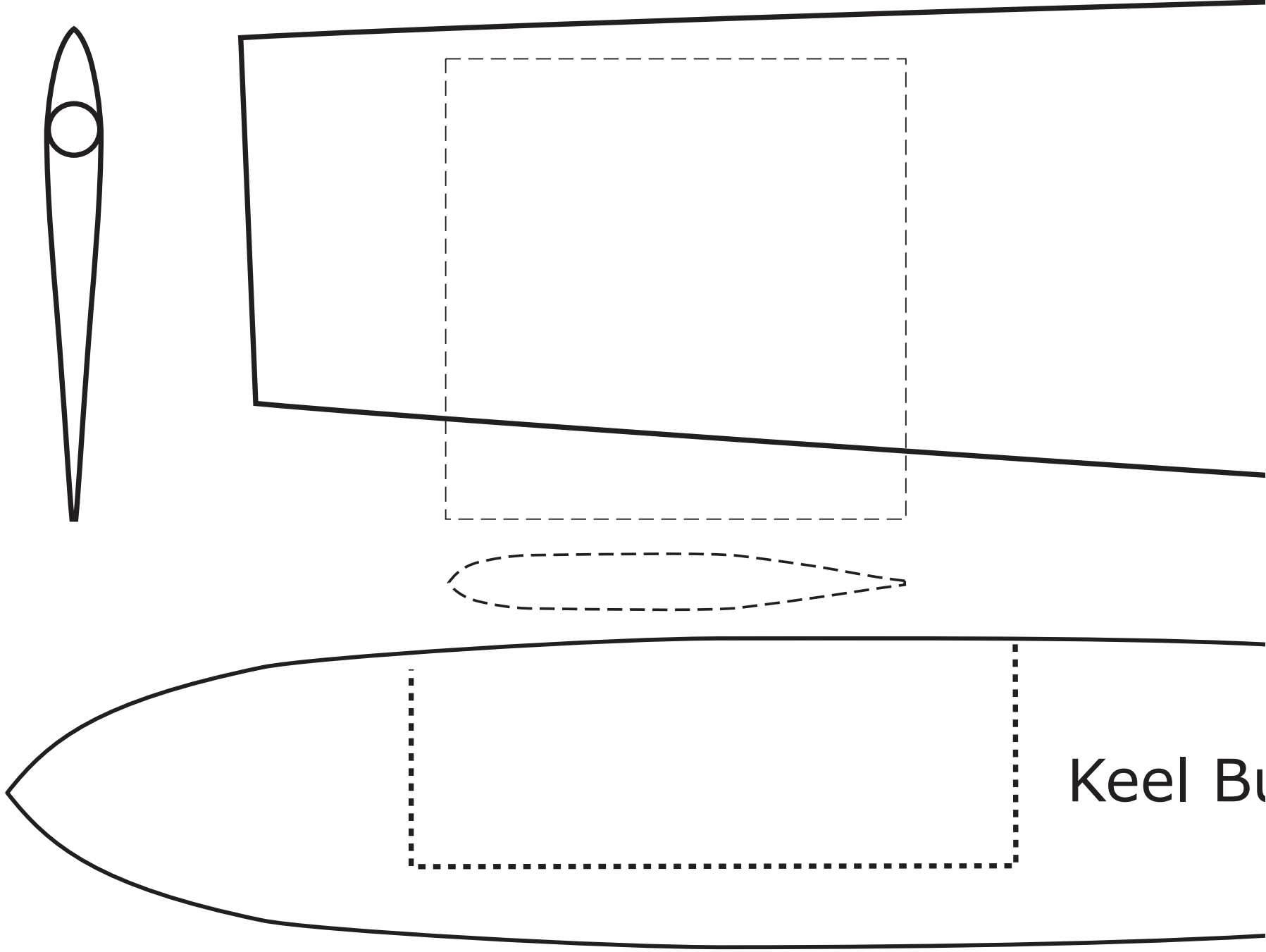
Bulkhead B

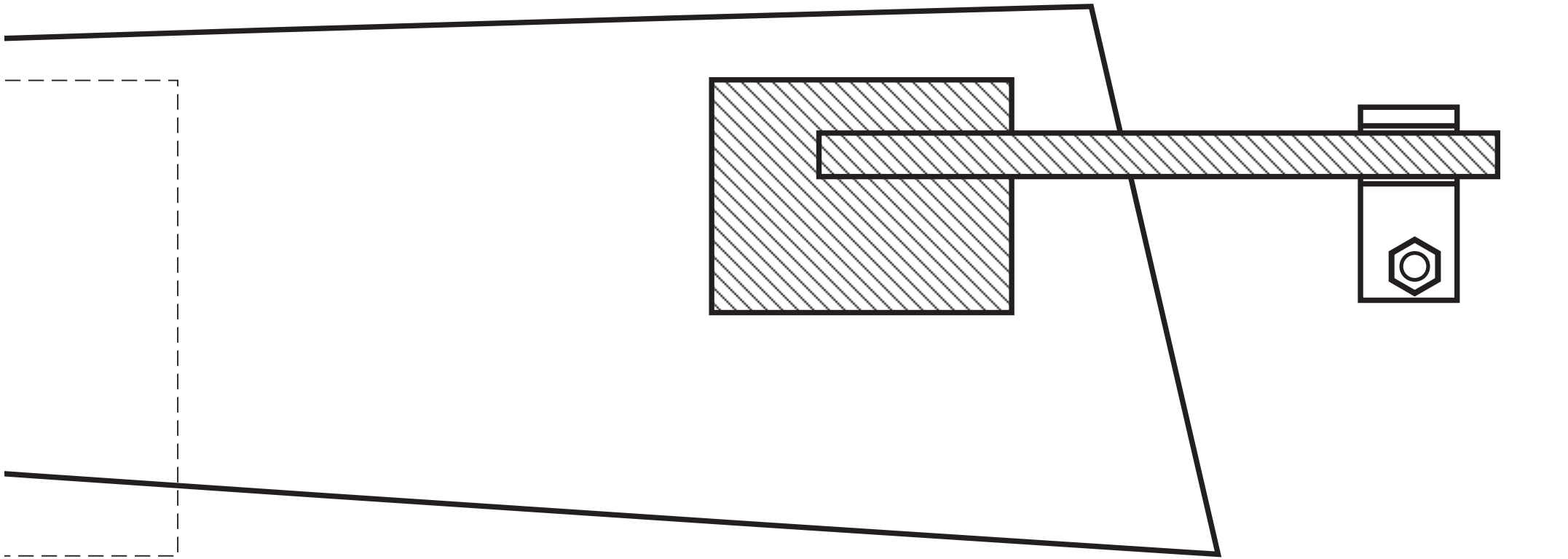












Hull Design: RacingSparrow1500

Scale 1:1

©Bryn Heveldt. www.racingsparrow.co.nz

Keel Bulb : Lead : H2